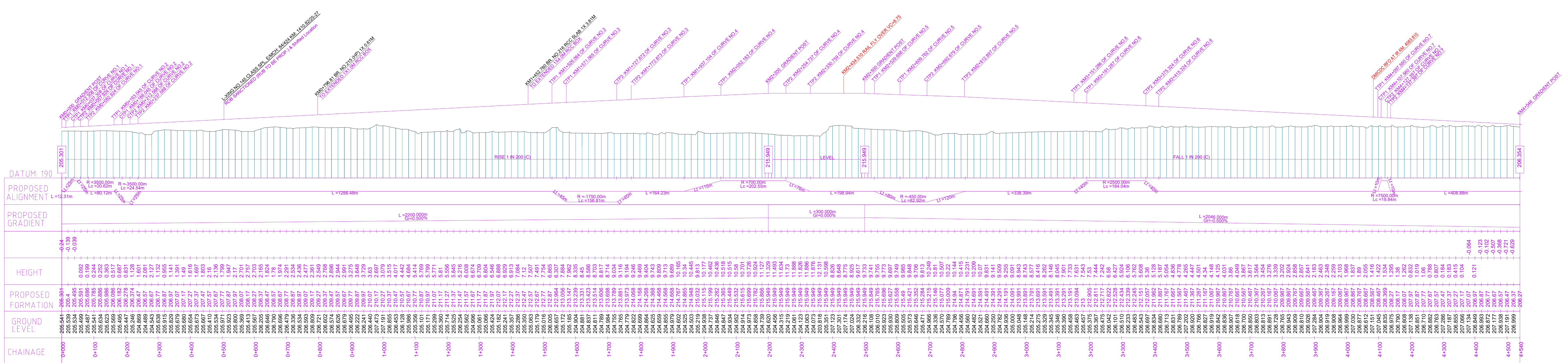



PLAN



LONGITUDINAL SECTION

INDICATIVE DRAWING

- LEGEND :
1. PROPOSED WORKS SHOWN IN RED.
 2. EXISTING WORKS SHOWN IN BLACK.

 DEDICATED FREIGHT CORRIDOR CORPORATION OF INDIA LTD.	
NAME OF WORK:	Design and Construction of Rail Flyover and approaches on Viaducts, Formation in Embankments/Cuttings including blanketing, Supply and Spreading of Ballast and related works for single track electrified railway line on Design Build Lump Sum Basis connecting New Boraki DFC yard to Dadri yard approx. length 4.54 Kms from Ch. 0.00 m (Rly Km 1410.436) to Ch. 4540 m (Rly Km 1414.955) and related Diversion works in connection with Eastern Dedicated Freight Corridor in the state of Uttar Pradesh in India.
TITLE:	INDICATIVE PLAN & PROFILE